



AL BASMA BRITISH SCHOOL

# Key Stage 5

# Options Booklet



**Phone**

+971 2 562 3454



**Website**

[www.albasmaschool.ae](http://www.albasmaschool.ae)



**PO BOX**

45994

**2026-2027**

# Introduction

## Message from Mr Sean Doherty Secondary Vice Principal

Dear Al Basma Year 11 Student,

KS5 marks a pivotal stage in an Al Basma student's academic journey, shaping their future aspirations and career pathways. We are here to support and guide them every step of the way.



At Al Basma, we are committed to providing a high-quality Sixth Form education that prepares students for university, apprenticeships, and the world of work. The KS5 Options process is a crucial step, allowing students to select subjects that align with their academic strengths, career goals, and personal interests.

The Sixth Form curriculum offers a combination of A-Level and BTEC qualifications, ensuring a broad and balanced education tailored to diverse learning styles and ambitions. Students will embark on a two-year course of study starting in August 2026, culminating in examinations and assessments in the summer of 2028.

We recognise that choosing KS5 subjects is both an exciting and challenging process. To ensure that students and parents are well-informed and confident in their decisions, we provide a structured programme of support, including information sessions, subject consultations, and career guidance.

We look forward to working closely with students and families to help them make well-informed choices that pave the way for success in higher education and beyond.

Best wishes,  
Mr Sean Doherty  
Secondary Vice Principal

# Subjects

Please see the list of AS and A Level subjects which are approved Thanaweya subjects. You must pick 2 or 3 subjects from the list below:

- Art and Design
- Biology
- Business
- Chemistry
- Computer Science
- Design and Technology
- Economics
- English Language
- English Literature
- French
- Geography
- History
- Mathematics
- Physics
- Psychology
- Sociology



This is the first step towards a new phase in your education. The choices you make will set the foundation for your university studies and/or future employment. This booklet will give you the information that you need to help you make the right choices. Please read it carefully and remember the key to selecting your option subjects is to ask yourself the following questions:

- What do I enjoy?
- What do I know I am good at?
- What do I need for future degree or career choices?
- Do I have a balance of subjects?
- Am I choosing subjects which align with my strongest iGCSE subjects?

It is very important that you enjoy the options you have chosen, as you have to study A Level subjects for 6 lessons a week or 14 lessons a week for BTEC subjects for the next two years. Do not make choices based on what your friends have picked, as it will be a long two years doing something you don't like! Remember, the two-year A-Level or BTEC courses are all challenging and require very effective time management and independent study. You must consider whether you have a realistic chance of success in your chosen subject based on what you enjoyed/did well at iGCSE, as the step up to A-Level is a big one.

Please note - you will have ideally achieved a grade 6 or above in a subject in order to choose it at A-Level. Those students who have not achieved a grade 6 will generally struggle to pass a full A-Level at the required grade E or above for graduation.

Please email any option queries to Ms Amal (KS5 Leader) at [ks5leader@albasmaschool.ae](mailto:ks5leader@albasmaschool.ae)

# Shahadat Al Thanaweya Al Amma at Al Basma

The Thanaweya is the UAE high school equivalency certificate.

Any student who has studied in the UAE for their final Secondary School year (Year 13) must have the Shahadat Al Thanaweya Al Amma if they intend to:

- Study in another Arabic Country (e.g. Jordan, Lebanon or Egypt) after the age of 18.
- Work in the UAE at any point after the age of 18.

To receive the equivalency certificate from the Ministry of Education, a student following the British curriculum in the current Y11, 12 and 13 classes must satisfy the following criteria:

1. Pass the MOE compulsory course exams in Year 13

- Arabic for Arabs
- Islamic for Muslim Arabs and Muslim non-Arabs
- Moral Education

2. Achieve grade 9 to 3 in at least 5 iGCSE or GCSE accepted subjects (not including Arabic, Islamic Studies, PE, Music, Drama or any BTEC courses). You must study at least one English GCSE, one Science GCSE and one Maths GCSE.

3. Achieve A to E grades in 2 IAS or AS Levels or 1 IA or A Level in accepted subjects or a Level 3, 120 Credit, BTEC in an accepted subject

## Please Note

**All students must complete Year 13 in order to graduate from high school.**

**All students must study the MoE curriculum in Y12 and 13**

MOE Compulsory Subjects

- Arabic A for Arabs
- Islamic Studies A for Arab Muslims or Islamic Studies B for Non-Arab Muslims
- Moral Education

Extra GCSEs or O-Level subjects can be taken in Years 12 or 13. A-Level Arabic is also available, but **does not count** towards the Thanaweya.

**Please note: GCSE, AS and A-Level exam dates and times are set by the UK Exam Boards and may fall on a Friday or on a public/religious holiday or late in the afternoon. As a school, we have no control over the final external examination schedule, and neither does ADEK.**

# ART & DESIGN A-Level

## Why study Art and Design?

An education in Art and Design is essential for anyone interested in a career in product design, architecture, textiles, fashion, jewellery, furniture design, interior design, graphics, photography, and publishing, as well as the fine arts of painting and sculpture. Art develops communication skills and self-confidence, problem-solving skills and teamwork. You will be able to work in any way you wish once you have learned about materials, processes, and skills. Art can be studied further at a university or art college.

## What will I study?

A-level coursework covers several different endorsements: Fine Art, Photography, 3D Sculpture and Graphic Designing. You will learn to use a sketchbook to make visual and other appropriate research and develop your ideas. You will also develop your knowledge of art and design from other cultures or history and relate it to your own ideas. You will explore a range of artistic media, materials, processes, techniques, and stimuli identifying the areas of strength you will use in the final assessment pieces. Media explored may include painting and drawing, graphics media, textile design, photography, 3D studies, printing, Photo editing, traditional and non-traditional media.

## How will I be assessed?

Component 1 is a portfolio of coursework and a personal study essay of 3000 words, which accounts for a percentage of the overall marks. Component 2 is an external paper which consists of six weeks of focused study period and ends with a 15-hour compulsory exam conducted in three sessions over a period of a week which accounts for the other half of the percentage of the overall marks. The final piece/s will be assessed on the extent to which it demonstrates: The organisation and relationships of visual and/or other forms; the selection and control of materials, media, and processes; and personal vision and presentation.

	Component 1/ Personal study	Component 2 (external exam)
A-Level Art craft and design	60%	40% (15 hour exam)

Where can I find out more information? Click below for A level.

[A Level Art and Design - Pearson Edexcel Specification](#)

If you studied this subject at iGCSE, you must have achieved **grade 6** to study it at A Level.

# BIOLOGY iA-Level

## Why study Biology?

Biologists are scientists who study the natural world and all the living things in it, from the largest mammals down to our very own microscopic DNA. This course builds on the foundation set at KS4, where students will take a deeper look at ecosystems and the complex network of systems that govern life, biological molecules and cellular biochemistry. Students will learn to approach scientific inquiry methodically and to answer questions about the natural world using a range of theories and experimental techniques that have wide-reaching links to industry and medicine.

Biologists can use this knowledge to do things like try to stop the spread of disease, utilise natural resources, improve public health, animal care and conservation and work out the true impacts of things like pollution. Biology is a key subject for lots of STEM careers, particularly in healthcare, medicine and jobs involving plants or animals. Career choices such as nursing, dentistry, forensic science, geology, oceanography, pharmaceuticals, energy, teaching, science writing, genetics and research are all possibilities after studying biology.

## What will I study?

Throughout the course, you will develop your ability to work scientifically. In addition, you will develop your knowledge of the topic areas you have already started to study at KS4. You will improve your ability to analyse and present data and apply your knowledge in unfamiliar contexts. The course covers 5 key areas through AS and A Level; Molecules, Diet, Transport and Health, Cells, Development, Biodiversity and Conservation, Practical Skills in Biology I & II, Energy, Environment, Microbiology and Immunity, and Respiration, Internal Environment, Coordination and Gene Technology.

## How will I be assessed?

You will complete six written exams; three at AS and three at A level. The exams will be one hour thirty minutes (AS), or one hour and forty-five minutes (A2) in duration. You will undertake some practical experiments during the course which you will have to describe in the exams. You will also be required to interpret the data resulting from these experiments in the exams.

On successful completion of the course, you will receive one A Level at grade A-C.

Where can I find out more information? [Click below for A level.](#)

[Edexcel International Advanced Level Biology \(2018\) | Pearson qualifications](#)

Please note, you must have studied this subject at iGCSE in order to select it at A-Level. You must have achieved grade 6 at iGCSE to study this subject at A Level. Single Science at iGCSE is not sufficient.

# BUSINESS iA-Level

## Why study Business?

In Business, you will be expected to take an interest in local and global business events and issues. The subject requires quite extensive reading and writing in response to business problems. An ability to handle numerical data is also required. Ideally, you will have already studied Business at iGCSE. A willingness to work hard and to take an interest in current events is obviously an essential requisite of success. Business complements most other subjects and is a useful field of study for those interested in a career in business, management, finance, banking, accounting, and law.

Business can lead to many different university degrees in the above disciplines too.

## What will I study?

You will have the opportunity to learn about how real businesses work. You will study how large and small businesses operate and how they are successful, how they adapt to change, how essential ICT is to their success and how it is used to support the growth of the businesses. The five main areas of study are production, marketing, accounting and finance, human resources, and business activity in the changing environment.

## How will I be assessed?

You will have 2 exams of 2 hours at AS-Level (Year 12) and a further 2 exams of 2 hours at A-Level (Year 13). All papers are essay-based exams, with mathematical questions also. Calculators may be used in both exams. Both papers test knowledge, understanding, applications, selection analysis and evaluation of topics taken from the whole subject content.

Where can I find out more information? Click below for A level.

[The New International A-level Business | Pearson qualifications](#)

If you studied this subject at iGCSE you must have achieved grade 6 in it to study it at A Level.

# CHEMISTRY iA-Level

## Why study Chemistry?

Reading Chemistry at A Level is a natural fit for the curious mind. Chemists at A level will conduct multiple experiments to study a range of reactions to test how different substances behave. The results can be groundbreaking, colourful, explosive or almost impossible to see. Chemistry helps you to develop research, problem-solving and analytical skills. It helps you to challenge ideas and show how you worked things out through logic and step-by-step reasoning. Chemistry is an important subject for careers in medicine, environmental science, engineering, toxicology, developing consumer products, metallurgy (studying how metals behave), space exploration, developing perfumes and cosmetics, pharmaceuticals, energy, teaching, science writing, software development and research.

## What will I study?

Throughout the course, you will develop your ability to work scientifically. In addition, you will develop your knowledge of the topic areas you have already started to study at KS4. You will improve your ability to analyse and present data and apply your knowledge in unfamiliar contexts. The course covers a range of key areas such as Structure, Bonding and Introduction to Organic Chemistry, Energetics, Group Chemistry, Halogenoalkanes and Alcohols, Practical Skills in Chemistry I and II, Rates, Equilibria and Further Organic Chemistry, and Transition Metals and Organic Nitrogen Chemistry.

## How will I be assessed?

You will complete 6 written exams throughout the two-year course; exams are either one-hour thirty minutes or one hour forty-five. You will undertake some practical experiments during the course which you will have to describe in the exams. You will be required to interpret the data resulting from these experiments in the exams.

On successful completion of the course, you will receive one A Level at grade A - C.

Where can I find out more information? Click below for A level.

[Pearson Edexcel International Advanced Level in Chemistry \(YCH11\)](#)

Please note, you must have studied this subject at iGCSE in order to select it at A-Level. You must have achieved grade 6 in this subject at iGCSE to study it at A Level. Single Science at iGCSE is not sufficient.

# COMPUTER SCIENCE

## iA-Level

### Why study Computer Science?

Computer Science is the invisible backbone of the modern world, from the AI in your phone to the infrastructure of the internet. Studying this subject isn't just about learning to code; it is about developing a high-level ability to solve complex problems, think logically, and design systems that work. You will gain a skill set that is in desperate demand across every industry; finance, engineering, medicine, and entertainment, making you highly employable and future-proof. If you want to stop just using technology and start creating it, this is the course for you.

### What will I study?

This course blends deep theoretical understanding with serious practical application. You will master programming in languages like Python, C#, or VB.Net, moving from the basics to advanced Object-Oriented and Functional Programming. Beyond code, you will explore the "big picture" technologies shaping our future: Artificial Intelligence (AI), Cyber Security, Computer Architecture, Networking, and Database theory. You will learn how computers actually "think" (Theory of Computation), how they store vast amounts of data, and how to design algorithms that are efficient and elegant.

### How will I be assessed?

You will be assessed entirely through exams, meaning there is no coursework project to worry about outside of class. Crucially, this specification is unique because 50% of your grade comes from On-Screen Programming exams (Unit 1 and Unit 3), where you write and test real code on a computer during the test, rather than writing it out on paper. The other 50% comes from written theory papers (Unit 2 and Unit 4) that test your understanding of technical principles.

- Unit 1 (AS year): On-screen Programming (2 hours)
- Unit 2 (AS year): Theory Concepts (1 hour 30 mins)
- Unit 3 (A2 year): Advanced On-screen Programming (2 hours 30 mins)
- Unit 4 (A2 year): Advanced Theory Principles (1 hour 30 mins)

On successful completion of the course, you will be awarded a single A Level grade. Please note this syllabus may be subject to change as it is currently being reviewed by the exam board.

Where can I find out more information? [Click below for A level.](#)

[Computer Science - OxfordAQA iAS/A Level Specifications](#)

You should have achieved grade 6 at iGCSE to study this subject at A Level.

# DESIGN & TECHNOLOGY (PRODUCT DESIGN) A-Level

## Why study DT?

At KS5 Design and Technology (Product Design) is a subject that provides a foundation for a range of engineering careers and pathways such as Civil Engineering, Mechanical Engineering, Graphic designer and Product developer etc. Pupils will get an opportunity to explore a personalised topic based on their area of interest and focus. This is a client-driven project based on a contextual challenge that will facilitate an area of extensive study and research. Students will cover a range of topics including Performance characteristics of materials, Digital technologies, Effects of technological developments, Factors influencing the development of products and Features of manufacturing industries as part of a wide-ranging curriculum.

## What will I study?

In Design & Technology, pupils will need to solve a contextual challenge for a range of clients by carrying out surveys and formal interviews with companies and individuals in order to meet the users' needs and wants. The intended clients will remain a constant feature throughout the project. This will be done via investigations, designing ideas, modelling, and creating prototypes, testing and evaluating based on their design brief and design specification. The subject is a mixture of theory and practical using a variety of tools which develop pupils' foundation skills and knowledge.

## How will I be assessed?

This will include one written exam (2 hours and 30 minutes), worth 50% of the overall mark and one non-examination assessment (controlled assessment/coursework) consisting of extensive research of materials, existing products, context in which the pupil's prototype will work, environmental issues, development of a prototype which will involve a large concentration on practical work. This is worth 50% of the overall grade. Your knowledge and understanding will be assessed as part of written assessments; this element will bear a weighting of 100 marks. At the end of the Design and Technology qualifications pupils will be awarded a Pearson Edexcel Level 3 Advanced GCE in Design and Technology.

Where can I find out more information? [Click below for A level.](#)

[A Level Design and Technology \(Product Design\) \(9DT0\) Specification Issue 2](#)

If you studied this subject at iGCSE you must have achieved grade 6 to study it at A Level.

# ECONOMICS iA-Level

## Why study Economics?

Many, if not most, of the nation's and the world's most significant social problems have an economic dimension. Microeconomics provides the tools to analyse the trade-offs that individuals, firms, and governments confront because of limited resources. It considers the choices that are made, the social context in which they take place and the implications for human welfare. Economists apply these tools to study a wide range of controversial public policy questions, including environmental regulation, government restrictions on domestic and international markets, the structure of the legal system and the design of tax policy. Macroeconomics explores the sources of economic growth and the causes of recessions and inflation. Macroeconomic analysis assesses monetary policy, explains the performance of financial markets, and considers international trade and financial links.

## What will I study?

The Pearson Edexcel International A-Level in Economics qualification enables students to:

- develop an understanding of economic concepts and apply these concepts to real-life situations
- calculate, interpret, and evaluate economic data in order to make reasoned arguments and informed judgements
- develop an awareness of economic change and its impact on developing and developed economies
- understand economic issues, problems and possible solutions that affect mixed economies
- participate effectively in society as citizens, producers and consumers.

## How will I be assessed?

Students will complete two written examinations, each equating to 50% of the overall iA-Level. Paper 1 focuses on Microeconomics and Business Economics, whilst Paper 2 focuses on Macroeconomics and the Global Economy. The content is appropriate and relevant for progression, and is appropriate for international students, building understanding and awareness of economic theory and testing concepts in realistic contexts. It develops students' ability to participate effectively in global society as citizens, producers, and consumers. On successful completion of the course, you will be awarded 1 A-Level graded A-E.

Where can I find out more information? [Click below for A level.](#)

[International Advanced Levels Economics \(2018\)](#)

If you studied this subject at iGCSE you must have achieved grade 6 to study it at A Level.

# ENGLISH LANGUAGE

## iA-Level

### Why study English Language?

A Level English Language covers a variety of different writing styles. Its study offers students the opportunity to think critically about language, analysing a writer's decision at all language levels. Students will learn how to evaluate the political and social elements of a text. We will cover intriguing topics across multiple disciplines such as psychology, neuroscience and sociolinguistics throughout the two-year programme. A-Level English Language will give students the skills to develop analytical skills, creative writing skills and essay writing skills. It offers students the chance to gain an in-depth understanding of a vast array of topics such as the History of English, English in the World, Language and the Self, Child Language Acquisition and Language Change in which they will need to study language theories and critically challenge perspectives and ideologies.

### What will I study?

In the first year of the course, you will refine both your writing skills and your reading skills. Your reading skills will be improved through accessing a range of different texts from a myriad of genres, forms and serving differing purposes. This will include seminal texts in literature to understand how writers make linguistic choices in order to fulfil their intended purposes. In the second year of the course, you will study a range of different topics such as corpus linguistics, theories of language acquisition, global variation in English, language and thought, language and gender, language and social class, as well as many others.

### How will I be assessed?

All assessments are in the form of an exam. At the closing of the first year, there are two exams: Paper 1 and Paper 2. Paper 1 is on Language and Context. Paper 2 is on Language and Society. At the closing of the two-year course, there are two exams: Paper 3 and Paper 4. Paper 3 Language Variation (Learning Language and International English). Paper 4 focuses on Language Exploration. Upon successful completion they will be awarded Grades A to E.

### Where can I find out more information? Click below for A level.

[International AS and A-level English Language \(9670\) | OxfordAQA International Qualifications](#)

Please note, you must have studied this subject at iGCSE in order to select it at A-Level. You must have achieved grade 6 at iGCSE to study this subject at A-Level. Studying ESL at iGCSE is not sufficient.

# ENGLISH LITERATURE

## iA-Level

### Why study English Literature?

A Level English Literature enables you to build a close appreciation of several treasures of world-class literature, as you encounter some of the finest works ever written. As well as expanding your horizons, this scaffolds critical thinking and supports the development of corollary skills, such as building an argument, expressing ideas clearly and developing your skills as a writer.

### What will I study?

The text lists are specially selected to ensure a range of traditional and modern prose and poetry. You will study a selection of works including Jacobean or Elizabethan tragedy as well as later plays, poetry and prose. You will build on skills of comparison, the ability to generate an informed personal response and further develop techniques needed to maintain a confident critical style. You will also refine your ability to analyse how language, form, structure, and contextual factors can be used to create meanings and effects.

### How will I be assessed?

The full International A Level is designed to be taken over two years. In the first year (AS level), there are two written examination papers. Unit One focuses on historical tragedy and a modern play, and Unit Two centres on how a sense of place is evoked in selected poetry and a prose work. Unit One is a closed-book exam. For Unit Two, an unmarked copy of the poetry will be provided in the exam, along with access to the prose text. You will choose two essay questions in each unit, one from a choice of two in each text.

The second year (A2) of the qualification also comprises two units. Unit Three attracts 30% of the overall mark, and centres on elements of crime and mystery in selected poetry and prose works. Unit Four, also worth 30% of marks, draws on students' wider guided reading around selected topics, including representations of childhood, women, race and war. This is assessed by a non-exam assessment submission of two essays (each 1250-1500 words).

On successful completion of the course, you will be awarded the International A Level in English Literature. The International AS Level is graded on a five-point scale: A, B, C, D and E.

Where can I find out more information? [Click below for A level.](#)

[International AS and A Level Specification](#)

Please note, you must have studied this subject at iGCSE in order to select it at A-Level. You must have achieved grade 6 at iGCSE to study this subject at A-level. Studying ESL at iGCSE is not sufficient.

# FRENCH iA-Level

## Why study French?

Studying a language, like French, develops strong communication skills and gives your education a global edge. Ideal for students who enjoy languages, culture, film, literature, and engaging with people from different backgrounds, this course deepens your understanding of the French-speaking world while building confidence in listening, speaking, reading, and writing. In an increasingly globalised world, French opens doors to exciting academic and career opportunities in fields such as international business, tourism, media, diplomacy, journalism, publishing, and translation. Whether you love languages or want to stand out in a competitive job market, iA-Level French is an impressive and inspiring choice.

## What will I study?

- This two-year course covers four themes (broken into three sub-themes) that address a range of social issues and trends, as well as aspects of the political and artistic culture of France and French-speaking countries. The themes are:
  - Theme 1: Les changements dans la société française - Changes in French society
  - Theme 2: La culture politique et artistique dans les pays francophones - Political and artistic culture in French-speaking countries
  - Theme 3: L'immigration et la société multiculturelle française - Immigration and the French multicultural society
  - Theme 4: L'Occupation et la Résistance - The Occupation and Resistance
- Themes 1, 3, and 4 focus on aspects of society or history of France only. Theme 2 requires students to broaden their knowledge across any Francophone country/countries and/or community/communities.

## How will I be assessed?

The exam consists of four papers, all externally assessed:

- Unit 1: Spoken expression and response - 15% - 40 marks
- Unit 2: Understanding and written response - 35% - 90 marks
- Unit 3: Understanding and spoken response - 15% - 40 marks
- Unit 4: Research, understanding and written response - 35% - 90 marks

Where can I find out more information? Click below for A level.

[Specification | Pearson Edexcel International Advanced Level French](#)

You will need to have studied French at iGCSE if you wish to take it at iA-Level. If you studied this subject at iGCSE you must have achieved grade 6 to be accepted onto the course.

# GEOGRAPHY iA-Level

## Why study Geography?

For students who are curious about the real world outside the classroom, Geography provides opportunities to deepen their understanding of the complex planet on which they live. Geography increases knowledge and confidence in dealing with challenging issues of both the physical and human environment. Geography is great for any kind of career that involves the environment, planning, or collecting and interpreting data. Popular careers for people with Geography qualifications include town or transport planning, surveying, conservation, sustainability, waste and water management, environmental planning, tourism, and weather forecasting.

## What will I study?

During the two-year course you will primarily learn through enquiry. In Year 12 you will complete Paper 1 (Hazards, Climate Change, Globalization - 60% of AS) and Paper 2 (Coasts, Urban Environments & Fieldwork - 40% of AS). This will be 50% of your final A-Level grade. In Year 13 you will complete paper 3 (Atmosphere and Weather Systems, Biodiversity Under Threat, Energy Gap & Development) and Paper 4 (Tectonic Activity and Hazards). You will also develop a wide range of geographical skills as you move through the course, such as map skills, graph skills and statistical skills, as well as generic skills such as debating strategies and research techniques.

## How will I be assessed?

You will take two written exams at the end of each year with the Cambridge exam board. The exams aim to assess the student's geographical knowledge and also the skills they have gained throughout the A-Level course. All four papers are 90-minute exams worth 25% of the overall A-Level grade. Papers 1 and 3 are physical geography and papers 2 and 4 are human geography. On successful completion of the course you will be awarded one A-Level grade.

Where can I find out more information? [Click below for A level.](#)

[Geography A-Level Specification](#)

If you studied this subject at iGCSE you must have achieved grade 6 to be accepted onto the course.

# HISTORY iA-Level

## Why study History?

Studying A-Level History will help you to answer important questions. Learning about past events and the people who have influenced history will allow you to understand how the world got to the point it's at now and how it will continue to develop in the future. Apart from studying a wide range of exciting historic periods, you'll learn a range of handy skills that will help you with University and future work. These include excellent communication and writing skills, how to construct an argument, research and problem skills, investigation and problem-solving skills and analytical and interpretation skills. As a traditional academic subject, History is widely respected by employers and universities alike.

## What will I study?

You will study four topics - two in Year 12 and two in Year 13. In Year 12 you will study two broad investigations, "Britain from 1964-91" which looks at the political landscape of Britain as well as their domestic and foreign policies. You will also study "The Soviet Union Lenin to Yeltsin" which looks at the rise and fall of the Soviet Union. In Year 13, you will study "Superpower Relations from 1943 to 1972" which looks at the relationship between the USA and Russia during the Cold War Era. You will also study "Civil Rights in the USA from 1945 to 1974" which is the study of how African Americans began to demand equal rights.

## How will I be assessed?

History A-Level is assessed by exam only. There are two exam papers which you will take at the end of Year 12 and 13. Papers 1 and 2 will test you on what you learnt in Year 12 as well as papers 1 and 2 in Year 13. All papers are composed of a mixture of source and essay questions to answer in 2 hours. On successful completion of the course, you will be awarded an A-Level grade A-E.

Where can I find out more information? Click below for A level.

[Pearson Edexcel International A-Level in History Specification](#)

You will need to have studied history at GCSE if you wish to take it at A-Level. If you studied this subject at iGCSE you must have achieved grade 6 to be accepted onto the course.

# MATHEMATICS iA-Level

## Why study Mathematics?

Mathematics, although abstract, can be seen in modelling both in science, computing and business. Mathematics students feel emboldened when they arrive at a solution which encourages resilience and fortitude, unlike any other subject. Students will implement strategies and model solutions throughout the course with the same skills that are desirable in any project within the field of STEM. Students' problem-solving and critical thinking abilities are a must when it comes to both gaining enrollment in university-level courses and overcoming the high demands of coursework. Coursework within the STEM fields at university normally comprises much more than just rote learning and requires students to become experts in a variety of modules. Hence why this course is really relevant and compliments any students who wish to continue their studies in physics and other courses that are maths intensive.

## What will I study?

International A-Level Mathematics is a modular course held over two years consisting of four modules of Pure Mathematics and two additional modules in Statistics and Mechanics. In Year 12 students will cover P1, P2 and S1 and in Year 13 they will cover P3, P4 and M1. Each module is equally weighted and the exams are all 90 minutes long and 75 marks each. The Pure modules build on each other. For instance, in Year 12 P1 you will do basic integration and in P3 they will integrate the trigonometric identities they were taught in P2. So the Pure Mathematics modules p1, p2, p3 and p4 are not only linked but they build on each other. The S1 in Year 12 and M1 in Year 13 are standalone, as they are based on statistical and mechanical applications, unlike Pure Mathematics which is calculus-driven. In Mechanics 1 students will be exposed to scientific principles using mathematical models and in statistics they will get a good insight into the world of statistics in terms of data inference.

## How will I be assessed?

In Year 12 and 13 students will be entered into P1 and P3 exams respectively in January. This gives a great benchmark for what work is needed. The final exams for Year 12 and 13 P2, S1 and P4 and M1 will be conducted at a later stage around May/June. Each exam is 90 minutes long and 75 marks in total. The first half of your A-Levels in Sixth Form are done in Year 12 this is your AS-Level award, so you can then assess it if you need to resit any so that your overall grade will be adequate for university applications. The Year 13 cohort will be a great point of contact as they will know first-hand how much work is required to obtain good grades.

Where can I find out more information? Click below for A level.

[International-A-Level-Maths](#)

Please note, you must have studied this subject at iGCSE in order to select it at A-Level. You must have studied Higher Level Maths at GCSE and achieved at least grade 6 at iGCSE to study this subject at A Level.

# PHYSICS iA-Level

## Why study Physics?

Do you like to understand how things work? Have you ever looked at the stars and wondered where it all comes from? Or maybe you are the kind of student who likes to build things? If you have a passion for learning, curiosity and perseverance physics could be for you. Physicists use the laws they uncover to develop new materials, machinery and technology to improve our lives and help us explore the universe further, from computers to telescopes and spacecraft. Physics is especially helpful for jobs that involve building things and developing new technologies, including: engineering (flight, buildings, space) astronomy, robotics, renewable energies, computer science, communications, space exploration, science writing, sports and games technology, research and nanotechnology. Students can opt for A-level Physics and most universities offer physics-related courses.

## What will I study?

Throughout the course, you will develop your ability to work scientifically. In addition, you will develop your knowledge of the topic areas you have already started to study at KS4. You will improve your ability to analyse and present data and apply your knowledge in unfamiliar contexts.

The course covers 8 key areas: Mechanics and Materials, Waves and Electricity, Further Mechanics, Fields and Particles, Thermodynamics, Radiation, Oscillations and Cosmology.

## How will I be assessed?

Students will sit 6 exams over the course of two years, two of which will focus primarily on practical Physics.

You will undertake some practical experiments during the course which you will have to describe in the exams. You will also be required to interpret the data resulting from these experiments in the exams.

On successful completion of the course, you will receive an A level, ranging from an A - D.

## Where can I find out more information? Click below for A level.

### [International A Level Physics Specification](#)

Please note, you must have studied this subject at iGCSE in order to select it at A-Level. You must have achieved grade 6 at iGCSE to study this subject at A Level. Single Science at iGCSE is not sufficient.

# PSYCHOLOGY iA-Level

## What is Psychology?

Psychology is the science of the human brain and behaviour. The word Psychology means the study of the mind, within this topic students will be able to explore how an individual's behaviour is influenced by both Nature and Nurture.

## Why study Psychology?

Psychology is a vast and fascinating subject which will offer you the opportunity to gain a multitude of transferable skills and knowledge. There are many cross-curricular overlaps in this course, with an emphasis on biology and mathematics. The course covers questions such as why do we behave the way we do? What biological processes are responsible for our behaviours? How do you develop mental disorders? This course will cover a range of issues and debates linked to Psychology, this course will provide students with insight into the key ideas and contemporary debates in Psychology. The exam board followed is the Oxford AQA International (9685). Below is a list of the topics which are covered throughout the two-year course.

## What will I study?

Compulsory topics:

AS- (First year Studying Psychology)

- Memory
- Social Psychology
- Psychopathology
- Biopsychology
- Cognitive Psychology
- Research Methods

A2- (Second year studying Psychology)

- Psychology of Sleep
- Schizophrenia
- Research Methods 2
- Approaches in Psychology
- Issues and Debates in Psychology
- Applied Psychology: Work and the Individual

## How will I be assessed?

You will be examined with two written exam papers at the end of your AS and a further two examinations at the end of A2. There will be four written examinations in total.

Where can I find out more information? [Click below for A level.](#)

[A-level Psychology](#)

If you studied this subject at iGCSE you must have achieved grade 6 at iGCSE to study it at A Level.

# SOCIOLOGY iA-Level

## What is Sociology?

Sociology is the study of society, social relationships, and social behaviour. It explores how individuals are shaped by social structures such as family, education, culture, media, religion, and government. Students will examine how societies are organised, how power and inequality operate, and how social change occurs across different cultures and global contexts.

## Why study Sociology?

Sociology is a thought-provoking and relevant subject that helps students develop a deep understanding of the world around them. It builds strong transferable skills, including critical thinking, evaluation, essay writing, and data interpretation.

The subject has clear cross-curricular links with Psychology, Geography, Politics, History, and Economics, and encourages students to apply academic theory to real-world issues. Students explore key questions such as:

- How are individuals socialised into society?
- How do family structures vary across cultures and over time?
- How do power, inequality, and social control operate?
- How do globalisation, technology, and the environment shape societies?
- How do sociologists research social behaviour and social change?

The course encourages students to use examples from their own society and global contexts, developing a strong sociological imagination and awareness of contemporary social debate.

## How will I be assessed?

Students are assessed through modular written examinations:

- Two written examination papers at the end of AS
- Three written examination papers at the end of A2

In total, students will sit five written examinations across the two-year course.

Where can I find out more information? Click below for A level.

<https://www.oxfordaqa.com/qualifications/international-as-a-level-sociology/>

If you studied this subject at iGCSE you must have achieved grade 6 at iGCSE to study it at A Level.

# BTEC Subjects

A BTEC (Business and Technology Education Council) is the equivalent of an A-Level, but with different assessment methods from an A-Level. It can suit students who prefer to be assessed through coursework and controlled assessment, rather than just exams.

If you are choosing a BTEC subject, then you can only choose 1, alongside 1 or 2 A-Level subjects.

Due to option blocks, you cannot choose more than 1 BTEC subject.

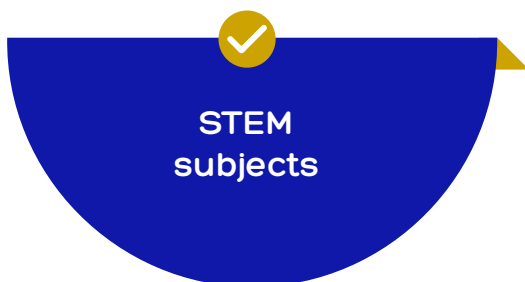
## How are BTECs assessed?

BTEC students are assessed through a combination of:

- Assignments and projects
- Practical tasks and presentations
- Controlled assessments
- Some externally assessed exams (depending on the subject)

This means students are evaluated over time, reducing pressure from one final exam and allowing them to demonstrate consistent progress.

## BTECs are highly valued for:



# BTEC Applied Science

## What is BTEC International Level 3 Applied Science?

At Al Basma, you will have the opportunity to study a BTEC International Level 3 Applied Science qualification. This is a two-year course designed as a practical and academic alternative to A-level sciences. The Applied Science BTEC (for short) is ideal for students who enjoy learning through hands-on activities and real-world scientific applications. The course covers a range of scientific disciplines, including biology, chemistry and physics, and develops essential laboratory, analytical and investigative skills. BTECs enable a student-centred approach to education, with a flexible, unit-based structure where knowledge and skills are applied through practical assignments, projects and some externally assessed units, rather than relying solely on final examinations.

## Why study BTEC International Level 3 Applied Science?

Studying BTEC International Level 3 Applied Science allows students to develop a strong understanding of scientific principles through practical, real-world application. The course builds essential skills in laboratory techniques, data analysis, problem-solving and scientific investigation across biology, chemistry and physics. It is ideal for students who prefer continuous assessment, as learning is structured around unit-based assignments and practical work rather than relying solely on final examinations. This qualification supports progression to a wide range of science-related university courses and careers, including health sciences, engineering, laboratory science and environmental studies, while also developing transferable skills such as teamwork, communication and independent research.

## How will I be assessed?

- Combination of internally assessed coursework and externally assessed units
- Assessment through practical laboratory work, scientific investigations and experiments
- Written assignments and research tasks completed throughout the course
- Externally assessed units set and marked by Pearson
- Ongoing assessment across the two-year course rather than relying on final exams alone
- Focus on applying scientific knowledge to real-world and practical contexts

## Where can I find out more information? Click below

[Specification - BTEC International Level 3 Applied Science](#)

# Business BTEC, Enterprise and Entrepreneurship

## What is Business BTEC, Enterprise and Entrepreneurship?

At Al Basma, you will have the opportunity to study a BTEC Level 3 Subsidiary diploma in Business BTEC, Enterprise and Entrepreneurship. This will be a two-year course. The Business BTEC (for short) course is a good alternative to A-level and is ideal for students who prefer to complete modular assignments. BTECs enable a student-centred approach to education, with a flexible, unit-based structure and knowledge will be applied to project-based assessments rather than a final examination.

## Why study Business BTEC, Enterprise and Entrepreneurship?

- BTEC offers you industry knowledge, transferable skills and behaviours to prepare you for a career in Business or to continue your education
- Offers a flexible and modular course structure to fit in with existing curriculum requirements
- Recognised by many universities and Higher Education Institutes worldwide, as an entry qualification

## How will I be assessed?

BTEC includes a range of assessment types and styles. All assessments are internal assessments meaning that they will be taken throughout the two-year period in class under the supervision of your teacher. Your internal assignments will usually take the form of assignments or reports. Each assignment is graded and this mark counts towards the final result of Pass, Merit or Distinction. Business BTEC, Enterprise and Entrepreneurship is equivalent to two international A-levels and students will work towards a Level 3 Subsidiary Diploma in Business, Enterprise and Entrepreneurship.

## What will I study?

The units you will study are:

Unit 1: Exploring Business:

Unit 2: Research and Plan a Marketing Campaign

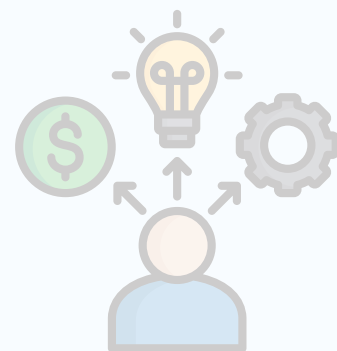
Unit 3: Business Finance

Unit 8: Human Resources

Unit 22: Market Research

Unit 33: Enterprise and Entrepreneurs

Unit 37: Intrapreneurship and Innovation in an Enterprise



Where can I find out more information? Click below

[Specification - BTEC International Level 3 Business](#)

# BTEC Engineering

## What is BTEC International Level 3 Engineering?

Students have the opportunity to study the BTEC International Level 3 Subsidiary Diploma in Engineering. This is a two-year qualification designed to develop a strong foundation in both theoretical understanding and practical application of engineering principles. The Engineering BTEC serves as a robust alternative to A-levels and is particularly well suited to students who benefit from a structured, applied approach to learning. The programme covers essential areas of engineering, including engineering mathematics, mechanical and electrical principles, and materials science. BTECs adopt a student-centred, unit-based framework, in which knowledge and skills are assessed through internally assessed assignments, projects, and practical applications, rather than relying exclusively on final examinations. This approach supports the development of analytical, problem-solving, and technical skills relevant to progression into higher education or engineering-related careers.

## Why study BTEC International Level 3 Engineering?

The BTEC International Level 3 Engineering qualification provides a strong foundation in both theoretical and practical engineering principles. Students develop essential knowledge in areas such as engineering mathematics, mechanical and electrical principles, materials, and design, while applying their learning to realistic engineering contexts.

BTEC Engineering is widely recognised and offers clear progression routes to higher education, apprenticeships, and engineering-related careers, making it an effective alternative to A-levels for students seeking an applied and career-focused pathway.

## How will I be assessed?

The course uses a unit-based, assignment-focused assessment approach, enabling students to demonstrate understanding through practical tasks and projects rather than relying solely on final examinations. This structure supports the development of key skills, including problem-solving, analytical thinking, and technical competence.

Where can I find out more information? Click below

[Specification - BTEC International Level 3 Engineering.](#)



# Things to think about when choosing your Y12 & Y13 subjects

Please bear these points in mind when indicating your choice of subjects:

- If you have a definite career in mind or university courses, you must make sure you choose any essential subjects for these
- If you have no definite future plans yet, you should choose subjects which keep open a broad range of possibilities for university-level study and careers
- It is important to choose subjects which you enjoy and which you have done well in at iGCSE
- If you are in doubt as to your ability or potential in any subject, ask the subject teacher
- Remember, you will study at least 2 subjects. Please note that the highest quality universities will expect 3 A-Level results.

Groups of A-Level subjects will then be organised to accommodate as many requested subject combinations as possible; your choice of A-Level/BTEC subjects will then be finalised.

Whilst we aim to meet the needs of all students, it may not always be possible for every student's choices to be met, in which case we will look at the second choice in the blocks.

In the unlikely event that the second or third choice cannot be met, contact will be made with parents and students, and alternative choices will be requested.

To complete options through the Google Form, please follow this link below

[Year 12 Options 26/27](#)

